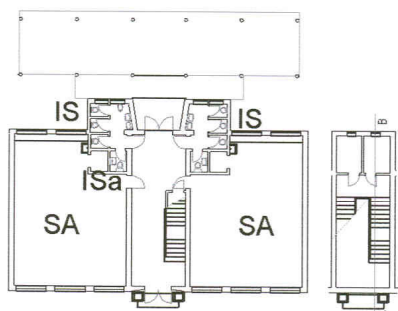
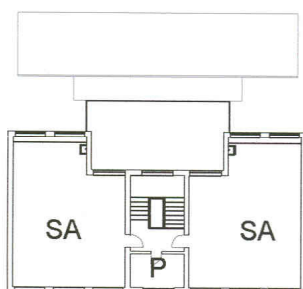


planta do piso

# JARDIM DE INFÂNCIA DE STO ANTÓNIO

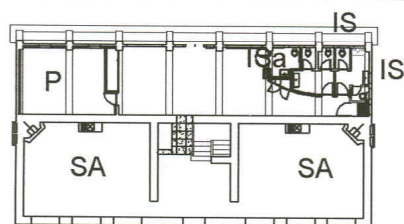


planta do piso inferior

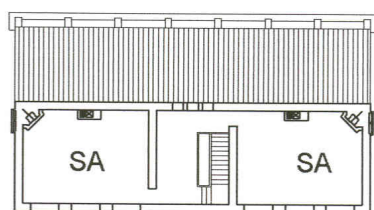


planta do piso superior

## EB1 DA COMENDA

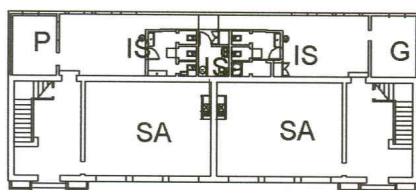


planta do piso inferior

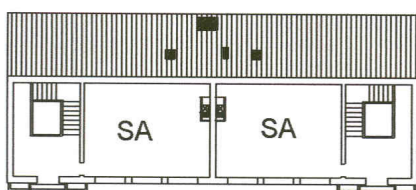


planta do piso superior

## EB1 DO CHAFARIZ DEL REI

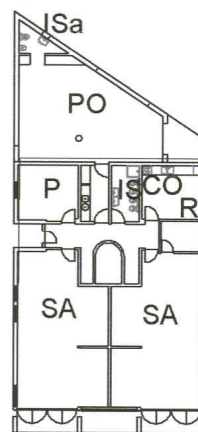


planta do piso inferior



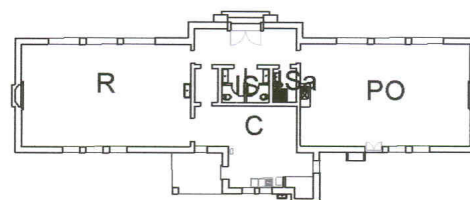
planta do piso superior

## EB1 DO HERÓIS DO ULTRAMAR

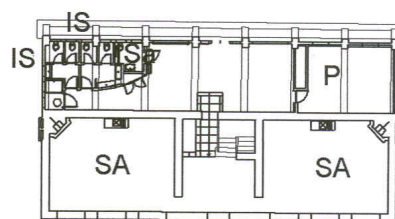


planta do piso

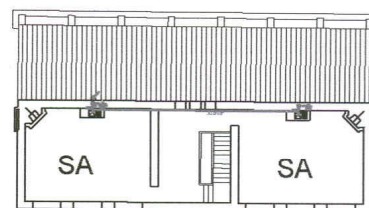
## JARDIM DE INFÂNCIA DO GARCIA DO RESENDE



planta do piso da Cantina



planta do piso inferior



planta do piso superior

## EB1 DO Bº DA CÂMARA

- SA sala de aula
- IS instalação sanitária alunos
- ISa instalação sanitária adultos
- G gabinete
- R refeitório
- C cozinha
- CO copa
- P sala de professores
- PO polivalente

Carta Educativa do Concelho de Évora  
Freguesia da Sra da Saúde  
ESTABELECIMENTOS PRÉ ESCOLAR E EB1  
COMPARTIMENTAÇÃO 1:500

Out 2006